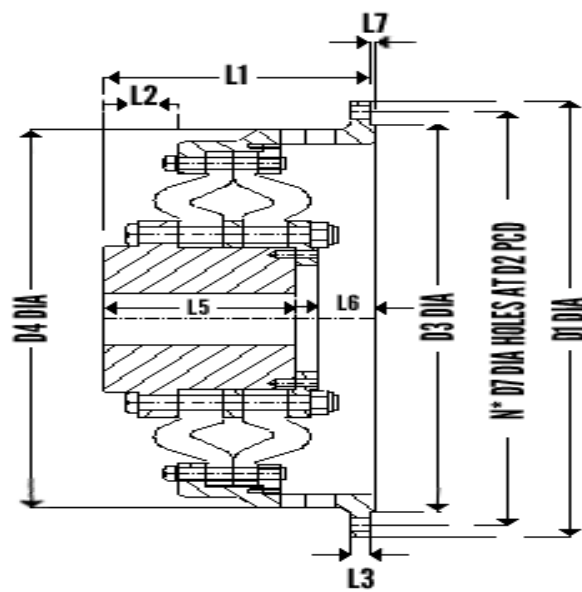




Unique Double Diaphragm Coupling

Series 1000

GENERAL ASSEMBLY DRAWING



DIMENSIONS AND STANDARD SIZES

SIZE VEZ	Max Speed		Dimensions							D0 MAX				Inertia MR ²				
	CI PINS	CS NM	L1 mm	L2 mm	L3 mm	L5 mm	L6	L7 mm	D1 mm	D2 mm	D3 mm	CI mm	Steel mm	N mm	D7 mm	Weight KG	Inner Kg.m ²	Outer Kg.m ²
35S,40S	4600	6700	71	16	8	52	13	3	221	205	189	35	35	12	10	6.2	0.002	0.027
43S,45S	4000	5870	83	21	8	62	14	3	252	235	218	45	50	12	10	8.8	0.006	0.049
51S,55S	3400	5500	92	23	10	69	14	3	290	268	246	50	55	12	11	13.0	0.011	0.099
60S	3400	5100	92	23	10	69	14	3	290	268	246	60	65	12	11	14.0	0.022	0.099
61S,65S	2850	4480	106	26	12	80	16	3	330	304	276	60	65	12	15	19.1	0.022	0.175
70S	2850	4480	106	26	12	80	16	3	335	308	283	70	75	12	15	21	0.039	0.176
71S,80S	2500	3890	132	36	14	103	16	3	380	354	328	70	75	12	15	31.3	0.052	0.398
82S	4600	6700	107	35	15	98		3	370	350	320	70	75	12	11			
85S	4000	5870	108	42	15	110	12	3	400	370	340	90	100	12	10.5	31.8	0.055	0.349
86S,95S	3400	5500	162	47	14	126	21	4	445	420	392	90	100	12	15	39.4	0.098	0.480
102S,115S	3400	5100	185	52	16	143	24	4	514	486	458	105	120	16	17	52.1	0.172	0.797
121S,135S	2850	4480	216	66	18	168	27	5	593	561	529	120	135	16	17	80.0	0.324	1.680
141S,165S	2850	4480	254	75	23	199	30	5	690	650	610	140	160	16	22	126.0	0.736	3.220
171S,195S	2500	3890	283	82	25	222	33	6	808	767	726	170	190	16	26	191.0	1.390	6.870
201S,235S	980	1540	331	100	28	258	41	8	956	908	858	200	230	16	32	315.0	3.340	15.300
241S,275S		1340	388	116	32	302	46	8	1110	1051	992		280	16	35			
280S,285S		1170	476	116	34	358	76	8	1262	1195	1128		310	16	35	509.0	7.550	34.500
310S,320S		1080	520	131	40	400	75	10	1386	1315	1244		330	24	38	790.0	17.000	62.700
360S		1080	520	131	40	400	75	10	1386	1315	1244		330	24	38	1385.0	36.500	163.700

